

RAID Inc. has combined the latest in a storage gateway with the performance, cost and critical availability of a SATA-2 network RL10 SAN which can be seamlessly integrated into any IT infrastructure. The fusion of these technologies offers user's the highest level of performance with block level data transfers at a very high availability that once was the preferred architecture of main frame environments at a cost that is up to 50% less than traditional Fibre Channel based RAID 5 solutions. Combining this with the latest release of Microsoft's SSA produces a gateway that is 30 to 80% faster than earlier releases. Advanced features such as heterogeneous file sharing and volume copy services, multipath I/O support and clustering capabilities make this the universal choice for users that want simplicity and ease of use in existing networks.

**Features of the Storage Gateway:**

- Dual AMD Opteron 280 CPU's
- 1GB of cache
- (2) 80GB mirrored hard drives
- MS Storage Server Enterprise Edition
- 2U chassis with redundant power supplies
- Ease of deployment on any network and can be integrated seamlessly with active directories services such as data and file encryption, network authentication and network wide group policies from a single console.
- File Sharing - allows for complex multi-platform file processing in Windows, UNIX, Macintosh, Linux and web http clients.
- Ability to optimize performance for network I/O processing and storage.
- Snap Shot/Volume Shadow Copy Service, enhanced data protection through a copy process that allows open files to be backed up without data inconsistency issues which can be scheduled at any time.

- Multipath I/O enables high performance and high availability through multiple paths to the SAN with DFS ensuring availability at the file and device level.
- Supports up to 8 nodes in a cluster, with the ability and functionality to add third party antivirus software.
- Optional Replication feature that increases data availability by creating multiple copies of data on remote servers.

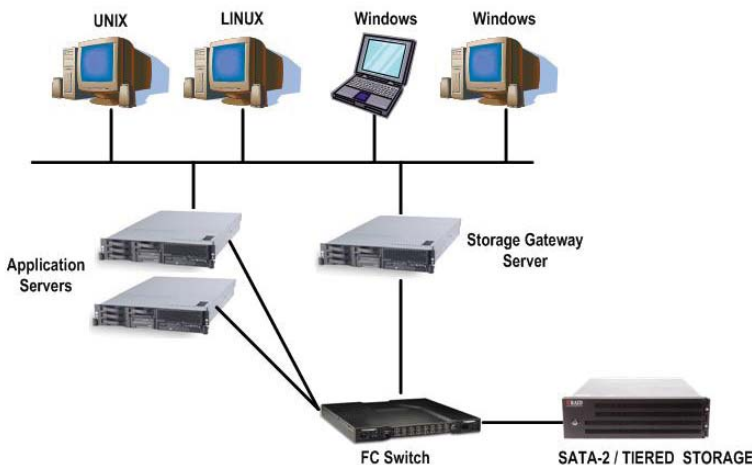
**Features of the SATA-2 SAN RL10:**

- Use any RAID Inc. SATA 2, iSCSI or Tiered Building Block Family Solution scalable from 2TB to 100TB.
- High performance - up to 57% faster in reads and 19% faster in writes than a fibre channel RAID 5 solution.
- Critical Availability Needs - can sustain multiple drive failures.
- Performance characteristics superior to comparable Fibre channel solution at 50% of the costs.
- RAID 10 consists of multiple sets of mirrored drives. These mirrored drives are then striped together to create the final virtual drive. The result is an extremely scalable mirror array, capable of performing reads and writes significantly than RAID 5 solutions.
- Highest Availability: there are multiple mirror sets, this configuration can actually handle multiple disk failures and still survive.
- RAID 5 and 6 options are available.

**Customized Solution**

RAID Inc will customize each solution to answer each customer's needs of performance, price, features, scalability and availability.

**SAN/NAS Fibre Channel Fusion RL10 Solution**



**SAN/NAS iSCSI Fusion RL10 Solution**

